

DD2700H

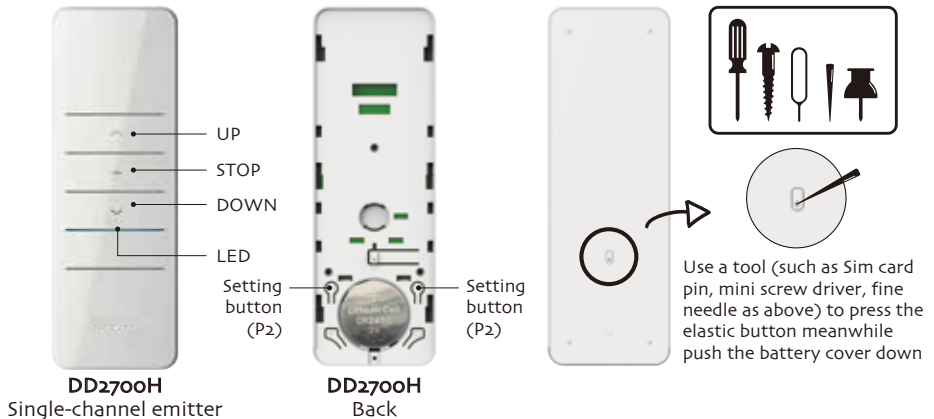
Single-channel Emitter

Instruction

Version: A/05

Instruction Of Buttons

Note: If you need to replace the battery, pls open the back cover.



Technical specification

Battery: 3V DC (CR2450)	Battery life: >2 years
Radio frequency: 433.05-434.79MHz	Working temperature: -10°C~50°C
Transmitting power: 10 mW	Radio range: 200 meters outdoor, 35 meters indoor

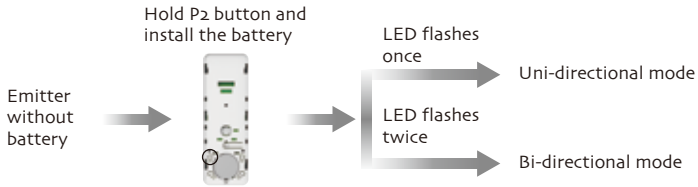


INGESTION HAZARD: This product contains a button cell or coin battery.

- Remove and immediately recycle or dispose of used batteries according to local regulations and keep away from children. Do NOT dispose of batteries in household trash or incinerate.
- Even used batteries may cause severe injury or death.
- Call a local poison control center for treatment information.
- Non-rechargeable batteries are not to be recharged.
- Do not force discharge, recharge, disassemble, heat above (40°C) or incinerate. Doing so may result in injury due to venting, leakage or explosion resulting in chemical burns.
- Ensure the batteries are installed correctly according to polarity (+ and -).
- Do not mix old and new batteries, different brands or types of batteries, such as alkaline, carbon-zinc, or rechargeable batteries.
- Remove and immediately recycle or dispose of batteries from equipment not used for an extended period of time according to local regulations.
- Always completely secure the battery compartment. If the battery compartment does not close securely, stop using the product, remove the batteries, and keep them away from children.
- Emitter couldn't expose to moisture or be struck heavily, or else the emitter life will be affected.
- If the emitter is not so sensitive or the radio range becomes shorter, pls check whether to change the battery.
- Under uni-directional mode, if you press any button more than 20S, while under bi-directional mode, you press any button 5S, the emitter will stop sending radio signals.

Switch Between Uni-directional And Bi-directional Mode

- 1, Both the two P2 buttons on the back are operable.
- 2, The factory default mode is Bi-directional mode, repeat the same operation to switch the mode circularly.



Lock / Unlock Combo-key Operation

- 1, Both the two P2 buttons on the back are operable.
- 2, If there is no operation for 10 seconds, it will automatically exit the setting status.
- 3, The factory default is unlock status, repeat same operation to switch status circularly.
- 4, When the combo-keys are locked, if you press the combo-keys, the emitter won't send any signal and LED won't flash.
- 5, Only the transmitting code will be affected if the combo-keys are locked.

